



LM6291



EASY

knitting

Designed by Rebecca Olson

What you will need:

RED HEART® Amigurumi:
1 ball 9627 Cactus

Susan Bates® Knitting

Needles: 2.75 mm [US 2] needles for working small circumferences and I-cord. Choose double pointed needles, 2 short circulars or 1 long circular, whichever you prefer.

2.75 mm [US 2] straight needles for working back and forth in rows

Susan Bates® Crochet Hook:
2.75 mm [US C-2].

Stitch markers, stitch holders, stuffing, four 6 mm safety eyes (two eyes for each cactus), yarn needle, sewing needle and thread to match dress, pins.

GAUGE: 25 sts = about 4" [10 cm]; 32 rounds = about 4" [10 cm] in Stockinette stitch worked in rounds (knit every round) and Double Seed stitch. **EXACT GAUGE IS NOT CRITICAL TO THIS PROJECT. Use any size needles to obtain the gauge.**

BUY YARN



RED HEART® Amigurumi, Art E885 available in 3.5 oz (100 g) 239

yds (219 m) cakes



Prickles & Pear Knit Cactus

These cacti pals aren't too spiky to be around! In fact, they're quite friendly and always give their friends very careful hugs.

Each cactus measures about 5" [12.5 cm] tall and 3" [7.5 cm] wide (at widest).

Notes

1. Before beginning, separate the different color sections of the yarn as follows: Pop the center color out by pushing gently on the center of the ball so that it comes out intact. Find the point where the color changes and cut the yarn. Repeat this process for the remaining yarn colors by carefully pushing the rings of color out of the larger ring and cutting. Wind each color into a separate ball to prevent tangling. You may find that one color appears both in the center, and on the outside of the ball, wind together or separately. In the pattern instructions, the light green color is referred to as **A**, the green as **B**, the black as **C**, and the pink as **D**.
2. Each cactus is made from 5 pieces: Body, 2 arms, and 2 legs.
3. Clothing is made separately and placed on completed cactus.
4. There is enough yarn in the single ball of yarn to make two cacti of either gender.
5. Body and arms are worked in rounds of Double Seed stitch pattern. Legs are made from I-cord.
6. Pieces are sewn together using yarn scraps, yarn tails or sewing thread.
7. Do not use safety eyes if toy is intended for a child 2 years of age or younger.

Special Stitches

kfb (knit into front and back) = Knit next stitch but do not remove from needle, knit into back loop of same stitch and remove from needle - 1 st increased.

M1 (make 1 knit) = Lift strand between needles to left-hand needle and knit strand through the back loop, twisting it to prevent a hole - 1 st increased.

Note: The following stitches used in the cactus arms, creates a small bend in a piece of knitting without having to use short rows.

pull&K (pull up and knit) = Pull up the previously worked stitch 2 rounds below the first stitch on the left needle and slip it onto the left needle. Knit the pulled up stitch together with the first stitch on the left needle.

pull&P (pull up and purl) = Pull up the previously worked stitch 2 rounds below the first stitch on the left needle and slip it onto the left needle. Purl the pulled up stitch together with the first stitch on the left needle.

PATTERN STITCH

Double Seed Stitch

Note: The body and arms of each cactus are worked in Double Seed stitch. To avoid confusion, detailed instructions and charts are provided. The changing stitch count can make it seem as if the stitch pattern is getting off track.

Rounds 1 and 2: *K1, p1; repeat from * around.

Rounds 3 and 4: *P1, k1; repeat from * around.

Repeat Rounds 1-4 for Double Seed stitch pattern.

continued...



2015 - 2018
WOMEN'S CHOICE AWARD®
AMERICA'S MOST RECOMMENDED
YARN BRAND



LM6291 Prickles & Pear Knit Cactus

BODY

Notes

1. Body is worked from the bottom to the top. Markers are placed around the body to keep track of increase locations. Once the markers are placed, slip them as you come to them unless otherwise specified.
2. Body can be worked by following written instructions or reading chart. Read all rows of chart from right to left.

With **A** or **B**, cast on 36 sts. Place marker for beginning of round. Prepare to work in rounds.

Rounds 1-4: Beginning with Round 1 of pattern, work in Double Seed stitch for 4 rounds.

Round 5 (increase round): [K1, place marker, M1, *p1, k1; repeat from * 7 more times, place marker, M1, p1] twice—40 sts. Note: There should now be five markers on the needle(s), including the beginning of round marker.

Rounds 6-9: Beginning with Round 4 of pattern, work in Double Seed stitch for 4 rounds.

Round 10 (increase round): [P1, slip marker, M1, *k1, p1; repeat from * to next marker, slip marker, M1, k1] twice—44 sts.

Rounds 11-14: Beginning with Round 3 of pattern, work in Double Seed stitch for 4 rounds.

Round 15 (increase round): Repeat Round 10—48 sts.

Rounds 16-19: Beginning with Round 2 of pattern, work in Double Seed stitch for 4 rounds.

Round 20 (increase round): [K1, slip marker, M1, *p1, k1; repeat from * to next marker, slip marker, M1, p1] twice—52 sts.

Rounds 21-24: Beginning with Round 1 of pattern, work in Double Seed stitch for 4 rounds.

Round 25 (increase round): [K1, remove marker, M1, *p1, k1; repeat from * to next marker, remove marker, M1, p1, place marker; k1, remove marker, M1, *p1, k1; repeat from * to next marker, remove marker, M1, p1—56 sts. Note: There should now be only two markers on the needle(s), including the beginning of round marker.

Rounds 26-32: Beginning with Round 4 of pattern, work in Double Seed stitch for 7 rounds.

Rounds 33 (decrease round): [K2tog, *p1, k1; repeat from * to 2 sts before next marker, p2tog, slip marker] twice—52 sts. Note: The final decrease (p2tog) is worked at the end of the round, just before slipping the beginning of round marker.

Round 34: *K1, p1; repeat from * around.

Round 35 (decrease round): Repeat Round 33—48 sts.

Rounds 36 and 37 (decrease rounds): [P2tog, *k1, p1; repeat from * to 2 sts before next marker, k2tog, slip marker] twice—40 sts.

Round 38 (decrease round): [P2tog, k2tog, *p1, k1; repeat from * to 4 sts before next marker, p2tog, k2tog, slip marker] twice—32 sts.

Rounds 39 and 40 (decrease rounds): [K2tog, p2tog, *k1, p1; repeat from * to 4 sts before next marker, k2tog, p2tog, slip marker] twice—16 sts. Remove markers while working next round.

Round 41 (decrease round): [P2tog, k2tog] 4 times—8 sts.

Cut yarn, leaving a long tail. Thread tail through stitches of last round and pull to close opening. Secure tail and weave to inside of body.

Using photograph as a guide, attach safety eyes, about 1½" [4 cm] above lower edge and about 10 stitches apart. Stuff the body and sew lower edges together, using mattress stitch.

ARMS (make 2 for each cactus)

Notes

1. Arms are worked from the shoulder to the hand.
2. Arms can be worked by following written instructions or reading chart. Read all rows of chart from right to left.

With same yarn color as used for body and leaving a long beginning tail for sewing, cast on 12 sts.

Place marker for beginning of round. Prepare to work in rounds.

Rounds 1-6: Beginning with Round 1 of pattern, work in Double Seed stitch for 6 rounds.

Round 7: P1, [pull&K, pull&P] twice, k1, *p1, k1; repeat from * around.

Rounds 8-10: Beginning with Round 4 of pattern, work in Double Seed stitch for 3 rounds.

Round 11: Repeat Round 7.

Rounds 12-17: Beginning with Round 4 of pattern, work in Double Seed stitch for 6 rounds.

Round 18: [K2tog, p2tog] 3 times—6 sts.

Cut yarn, leaving a long tail. Thread tail through stitches of last round and pull to close opening. Secure tail and weave to inside of arm.

Stuff the arms, shaping the stuffing to emphasize the bend.

LEGS (make 2 for each cactus)

Note: Legs are made from I-cord.

With **C**, cast on 6 sts, knit all the sts, *do not turn work. Slide all the stitches to opposite end of needle. Carry yarn tightly across back of work, and knit all the stitches; repeat from * 14 more times.

Cut yarn, leaving a long tail. Thread tail through stitches of last round and pull. Do not trim tail, it can be used later to sew leg to body.

OVERALLS (make for boy cactus)

Notes

1. Overalls are worked from the pant legs up to the waistband.
2. Each pant leg is worked separately then joined together and body of pants worked.

Pant Leg (make 2)

With **B**, cast on 12 sts. Place marker for beginning of round. Prepare to work in rounds.

Rounds 1-4: Knit.

Cut yarn, leaving a long tail for sewing. Place these stitches on a holder then make second pant leg and keep the stitches of the second pant leg on the needle(s).

continued...



Join Pant Legs

Round 5: Beginning with second pant leg, k6; working over first pant leg sts on holder, k12; continuing over second pant leg sts, k6—24 sts.

Round 6: [K1, M1, k10, M1, k1] twice—28 sts.

Round 7: Knit.

Round 8: [K1, M1, k12, M1, k1] twice—32 sts.

Round 9: [K1, M1, k1, M1, k12, M1, k1, M1, k1] twice—40 sts.

Round 10: [K1, M1, k1, M1, k16, M1, k1, M1, k1] twice—48 sts.

Round 11: Knit.

Round 12: [K1, M1, k1, M1, k20, M1, k1, M1, k1] twice—56 sts.

Rounds 13-16: Knit.

Bind off.

Carefully press the overalls flat with an iron to prevent the waistband from curling.

Straps

With right side of overalls facing, place two markers on top edge of front and back, centered over side edges and about 4 stitches apart.

Note: The two straps are slightly different lengths. When you sew the arms to the body, sew one arm lower than the other to fit the overall straps.

left strap: With crochet hook, draw up a loop of **B** in left front marked stitch, chain 12 or until chain measures about 2½" [6.5 cm]; slip stitch in left back marked stitch. Remove left side markers. Fasten off and weave in ends.

right strap: With crochet hook, draw up a loop of **B** in right back marked stitch, chain 9 or until chain measures about 2" [5 cm]; slip stitch in right front marked stitch. Remove right side markers. Fasten off and weave in ends.

DRESS (make for girl cactus)

Notes

1. Dress is made from 4 pieces: 2 sleeves, a bodice, and a skirt.
2. Pieces are sewn together to form dress.

Sleeves (make 2)

With **D**, cast on 14 sts. Place marker for beginning of round. Prepare to work in rounds.

Round 1: Knit.

Round 2: K3, kfb, k6, kfb, k3—16 sts.

Rounds 3 and 4: Knit.

Bind off, leaving a long tail.

Bodice

Note: Bodice is worked back and forth in rows.

With **D**, cast on 45 sts.

Rows 1-5: Beginning with a wrong side (purl) row, work in Stockinette stitch (knit on right side, purl on wrong side) for 5 rows.

Bind off, leaving a long tail for sewing.

Skirt

With **D**, cast on 14 sts. Place marker for beginning of round. Prepare to work in rounds.

Rounds 1-8: knit.

Bind off, leaving a long tail for sewing.

Attach Sleeves

Fold the bodice in half, bringing the side edges together. Beginning at cast-on edge, sew the first 3 rows of side edges together, using mattress stitch.

first sleeve: Place one sleeve in the remaining opening, with bind-off edge of sleeve to the outside and cast-on edge against side edge opening. Sew the bottom third of the sleeve into the side seam.

second sleeve: Place remaining sleeve on top of bodice fold, directly across from first sleeve with bind-off edge of sleeve to the outside and cast-on edge against bind-off edge of bodice. Sew the bottom 4 stitches of the sleeve cast-on edge to the top of the bodice.

Attach Skirt

With sewing needle and thread, loosely baste around the bind-off edge of skirt. Pull on the end of the basting thread to gather the skirt into ruffles. Pin the gathered top of skirt to the cast-on edge of the bodice and sew in place, using mattress stitch.

FLOWER (make for girl cactus)

Crochet hook and **D**, chain 6, slip st in 6th chain from hook to make first petal, [chain 5, slip stitch in same chain to make next petal] 4 times to make a total of 5 petals.

Fasten off, leaving a long tail for sewing. Thread long tail through base of petals to secure. Do not trim tail.

FINISHING

Referring to photograph as a guide to placement, use yarn tails or yarn scraps to sew the following pieces together.

1. Sew arms to body. Sew one arm lower than other arm to fit the dress sleeves or overall straps. Lower arm should be slightly below the eyes and higher arm should be slightly above the eyes.
2. Sew legs to bottom of body, each about 1" [2.5 cm] from the side edge.
3. For girl cactus, sew flower to top of side of head.

Dress the cactus in the dress or overalls.

Weave in and trim any remaining ends.

ABBREVIATIONS

A, B, C, and D = Color A, Color B, Color C, and Color D; **k** = knit; **k2tog** = knit next 2 sts together; **p** = purl; **p2tog** = purl next 2 sts together; **st(s)** = stitch(es); **[]** = work directions in brackets the number of times specified; * = repeat whatever follows the * as indicated.

See next 2 pages for alternate photos and charts



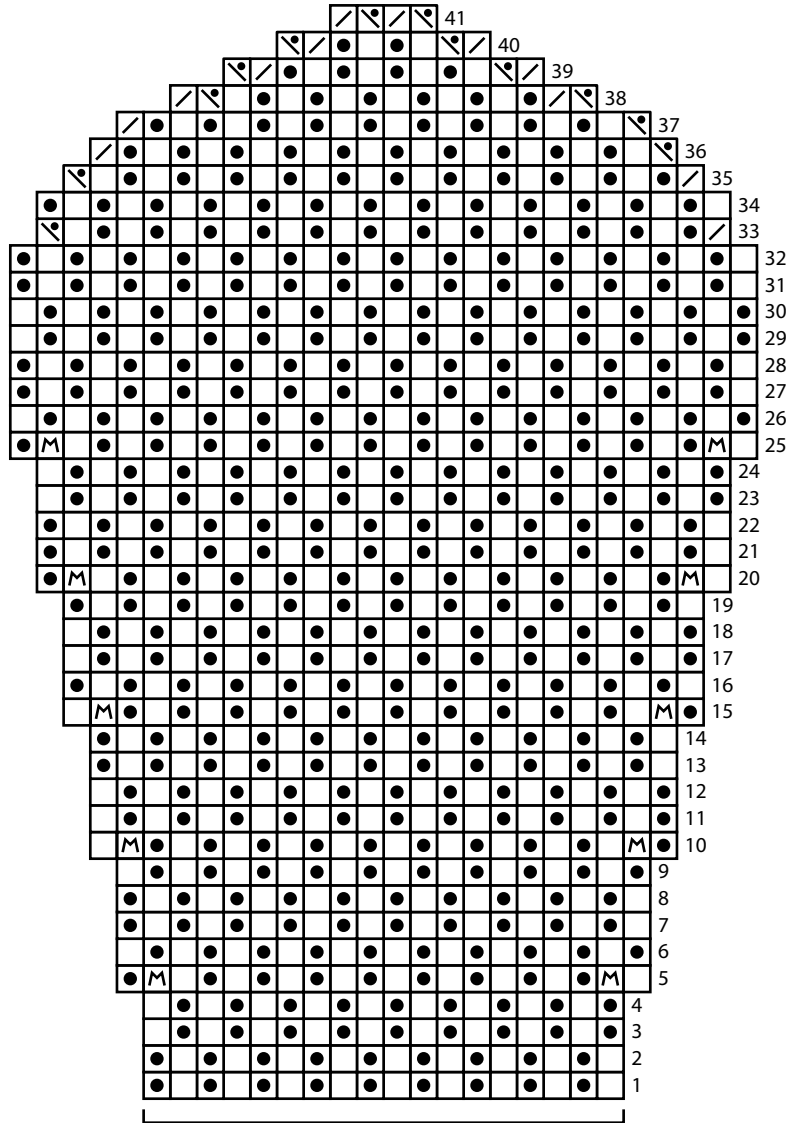
LM6291 Prickles & Pear Knit Cactus





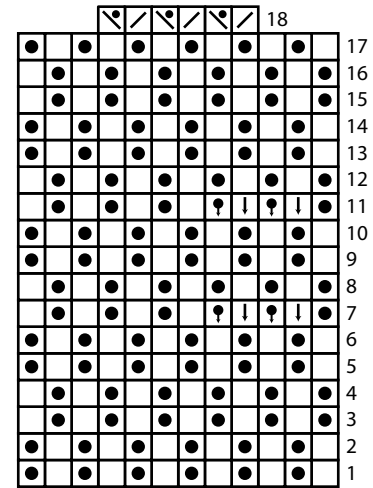
LM6291 Prickles & Pear Knit Cactus

Body Chart



work twice

Arm Chart



KEY

- knit on right side, purl on wrong side
- purl on right side, knit on wrong side
- M make 1 (M1)
- / k2tog (knit 2 stitches together)
- \ p2tog (purl 2 stitches together)
- ↓ pull&K (pull up and knit)
- ↑ pull&P (pull up and purl)